

# KNOWGE

IT'S TIME TO KNOW



# GENERAL OVERVIEW



The **Engineering Group** is the Italian leader in the information technology sector with over **50 offices** in Italy, Spain, Belgium, Germany, Republic of Serbia, Latin America and the United States.

With approximately **9,000 employees**, the group manages IT initiatives in over **20 countries worldwide** with projects in various business areas: Finance, Public Administration and Healthcare, Industry and Service, Telecommunication and Utilities.

It operates in the outsourcing and cloud computing market via an integrated network of 4 data centers located in Italy, equipped with infrastructure aligned to the best technological, quality and security standards.

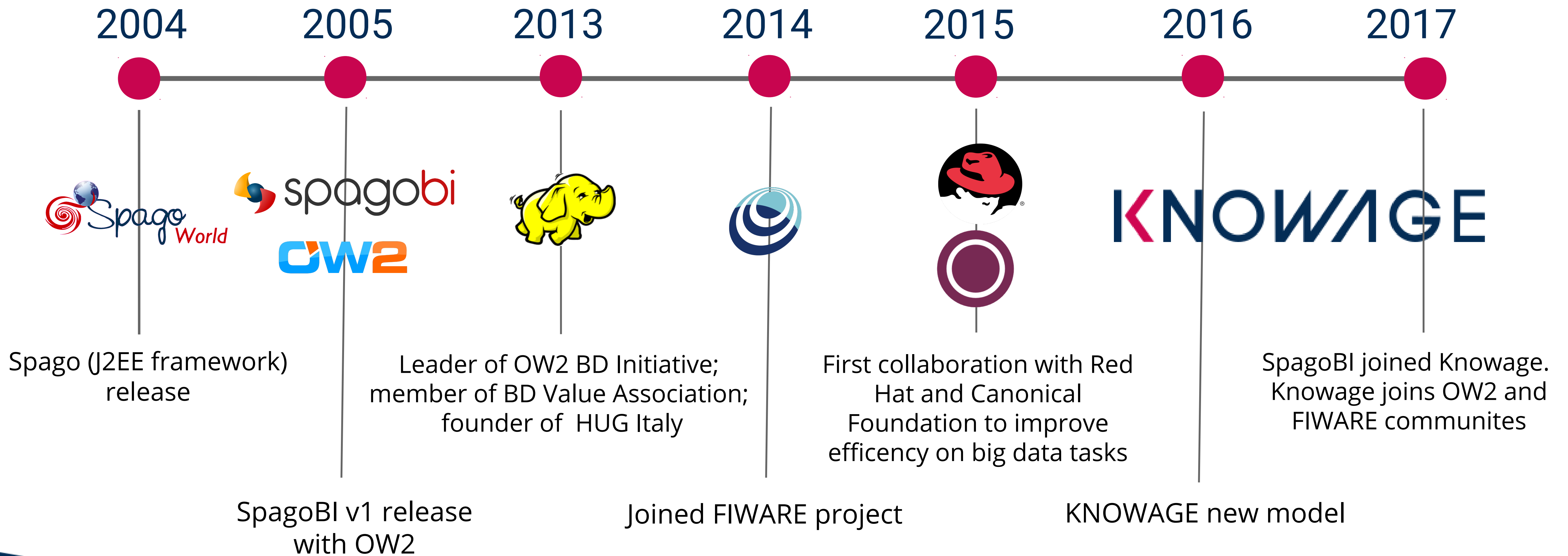
The Group plays a leadership role in software research, coordinating various national and international projects through a network of scientific and university partners throughout Europe.

[www.eng.it](http://www.eng.it)



# Open source player

KNOWAGE



- **Open** source and open standard
- Community edition & **enterprise** edition
- Responsive GUI, ready for **mobile**
- **OEM** enabler
- **Modular** offering, single solution

Open source analytical suite

KNOWAGE

**Hadoop** Pixel-perfect Mash-up Data mining  
Static report Real-time  
DWH Forecasting SDK  
Interactive cockpits  
**Geography** Integration



Advanced analytics Self-service APIs  
Multistructured data OLAP Distribution  
Off-line production  
Maps GIS Scorecards  
KPI What-if  
Alert Simulation model REST Services



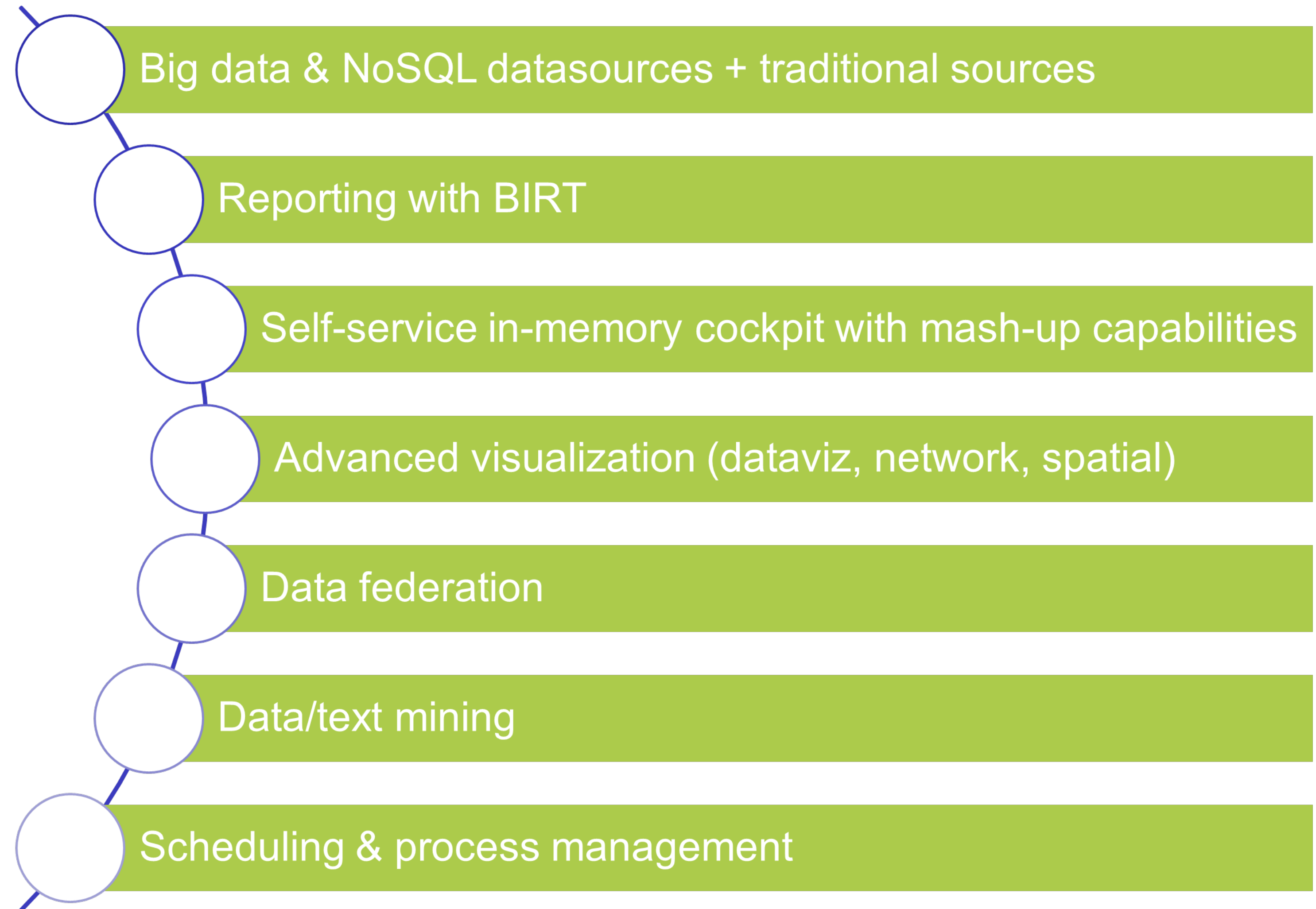
# Big Data Analytics

**KNOWAGE**



**BIG DATA**

COMBINE STRUCTURED HISTORICAL  
ENTERPRISE DATA WITH EXTERNAL  
MULTISTRUCTURED ONES



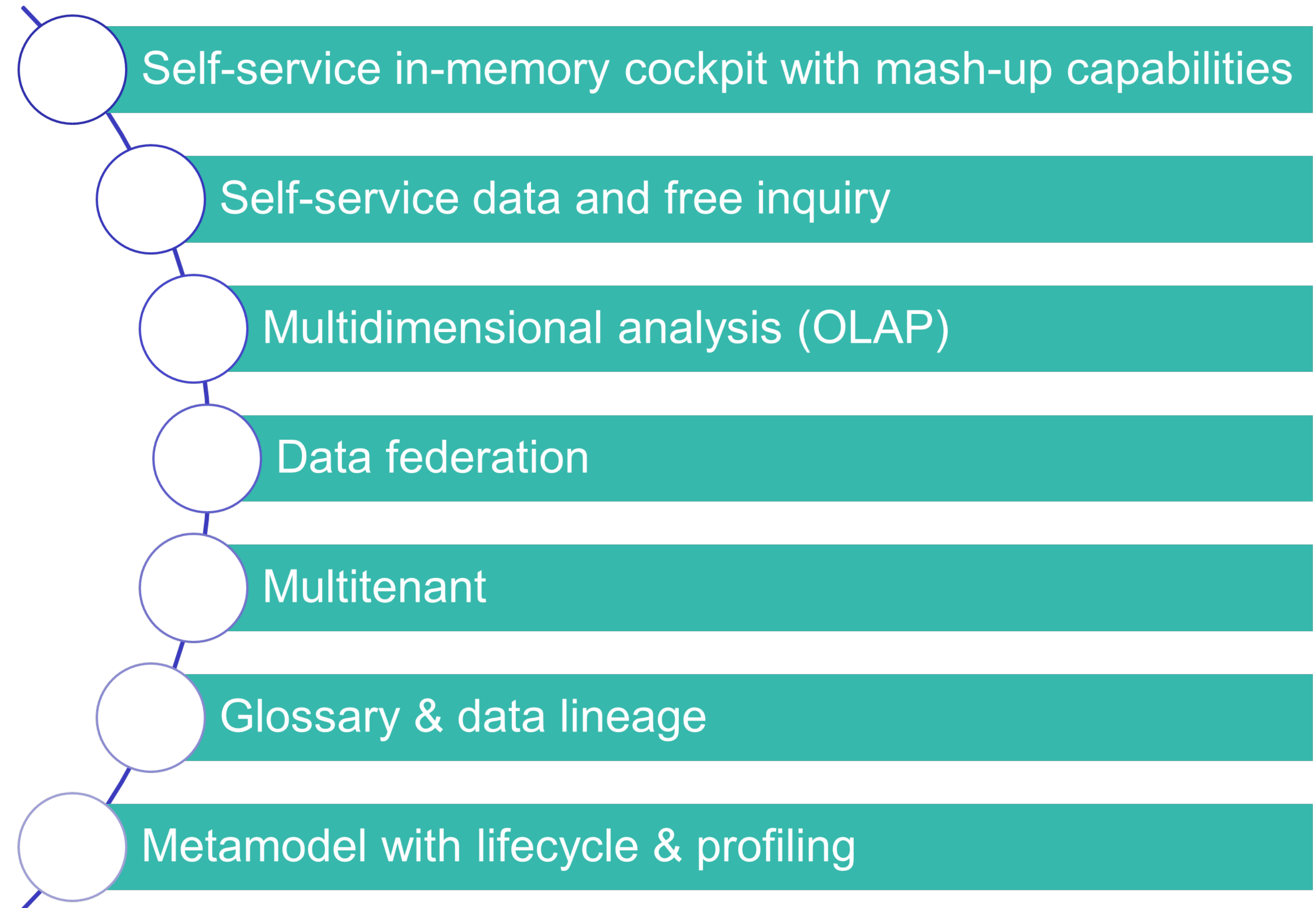
# Smart Intelligence

**KNOWAGE**



**SMART INTELLIGENCE**

USABILITY, AD-HOC REPORTING, FREE  
INQUIRING, SELF-MANAGEMENT FOR  
END USER





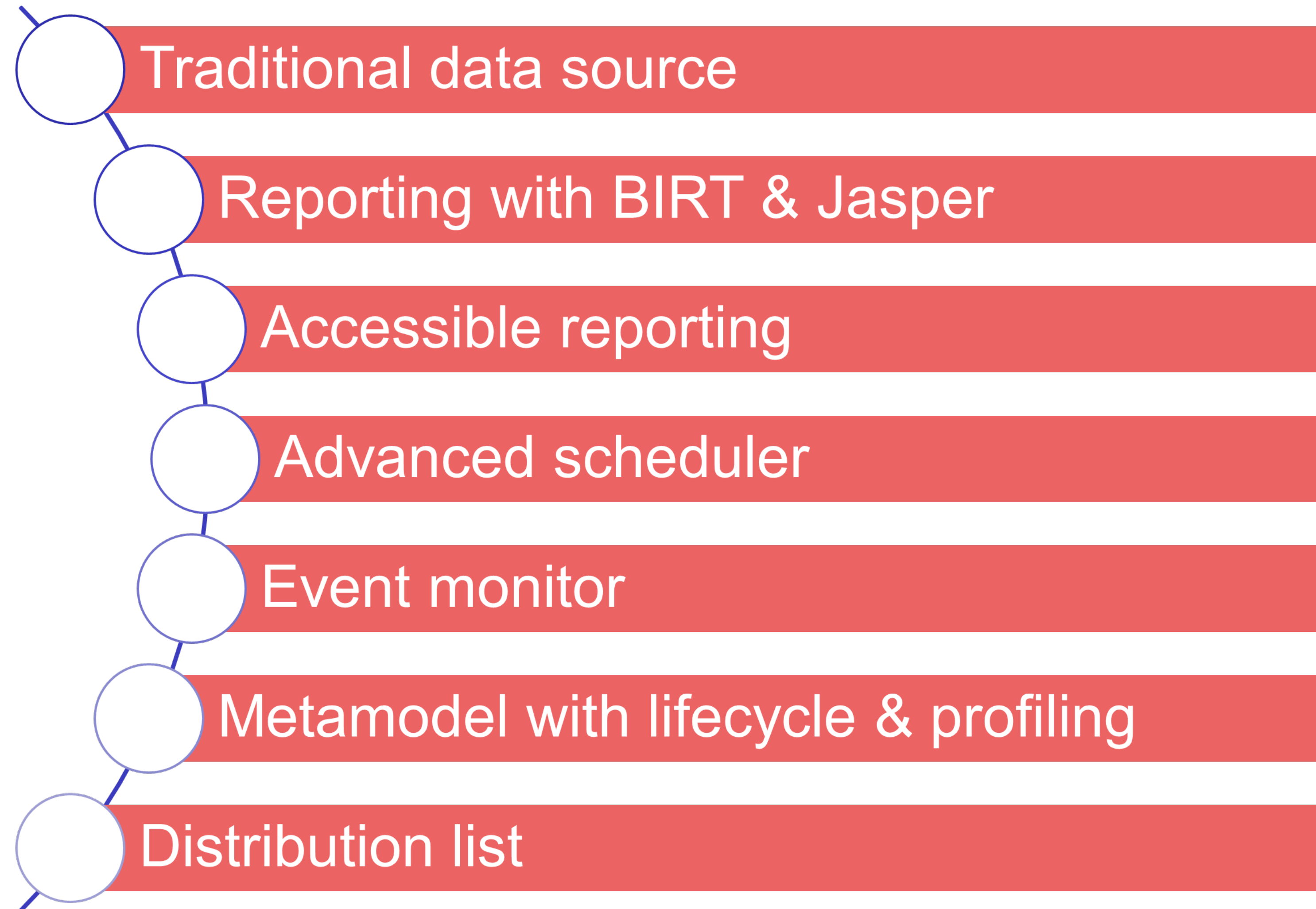
# Enterprise Reporting

KNOWAGE



ENTERPRISE REPORTING

CERTIFIED DATA, CERTIFIED PROCESSES,  
CERTIFIED REPORTS, CERTIFIED USERS



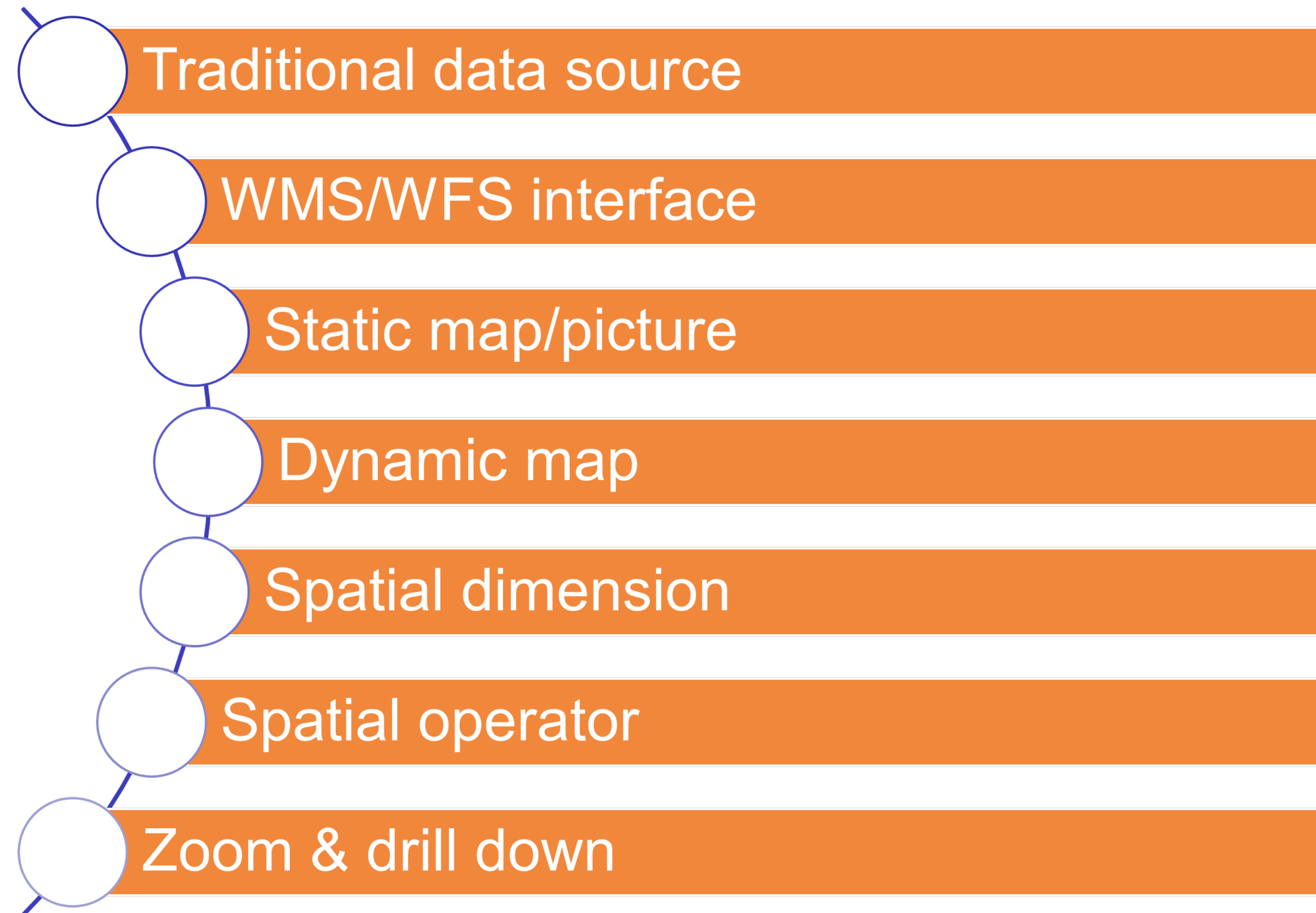
# Location Intelligence

**KNOWAGE**



**LOCATION INTELLIGENCE**

COMBINE BUSINESS MEASURES  
AND SPATIAL DATA AT RUN TIME





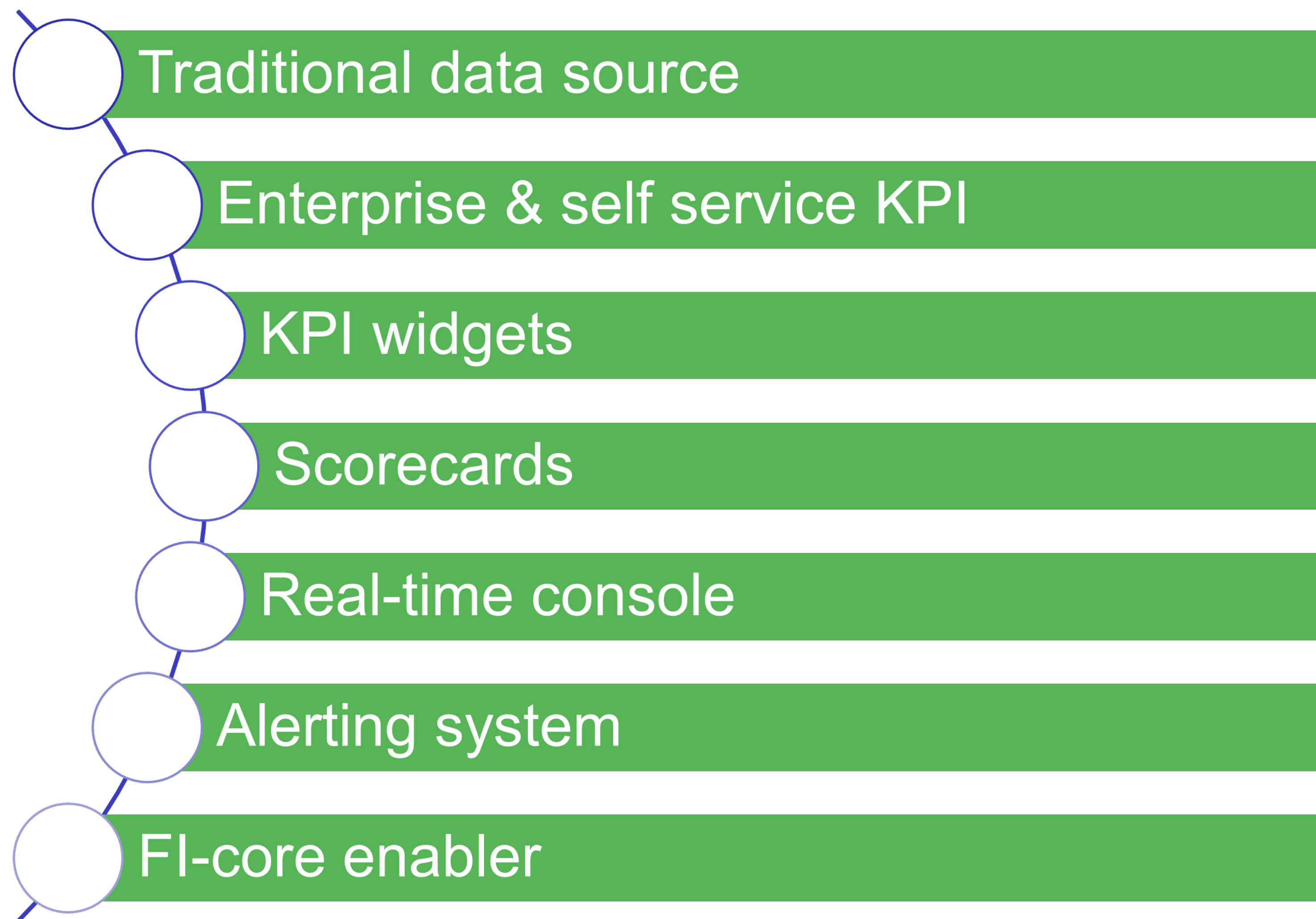
# Performance Management

**KNOWAGE**



PERFORMANCE MANAGEMENT

COMBINE HISTORICAL DATA WITH  
RT MEASURES, DETECT&REACT



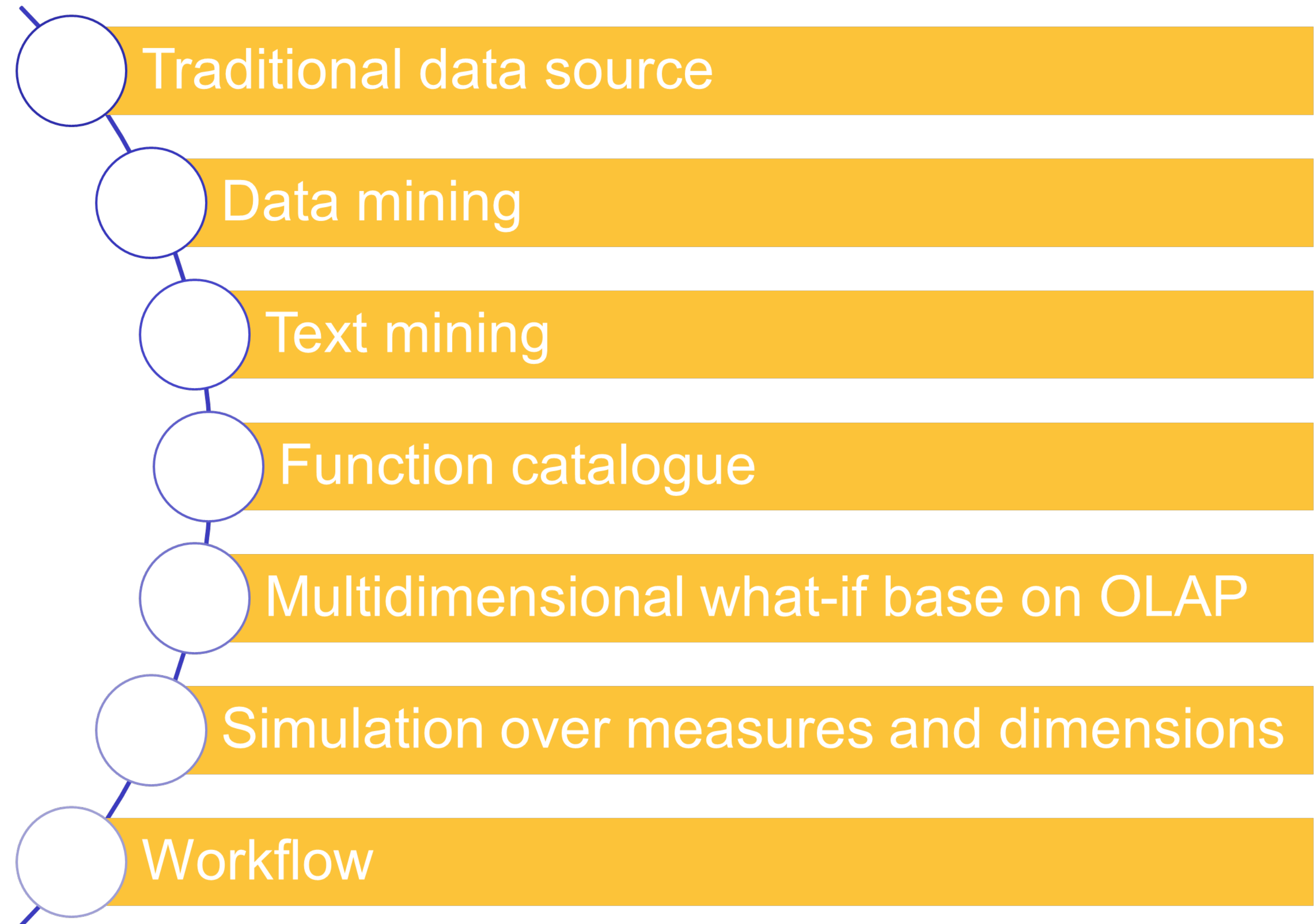
# Predictive Analysis

**KNOWAGE**



**PREDICTIVE ANALYSIS**

MAKE HYPOTHESIS AND  
EVALUATE THEIR IMPACTS IN AN  
INTERACTIVE WAY





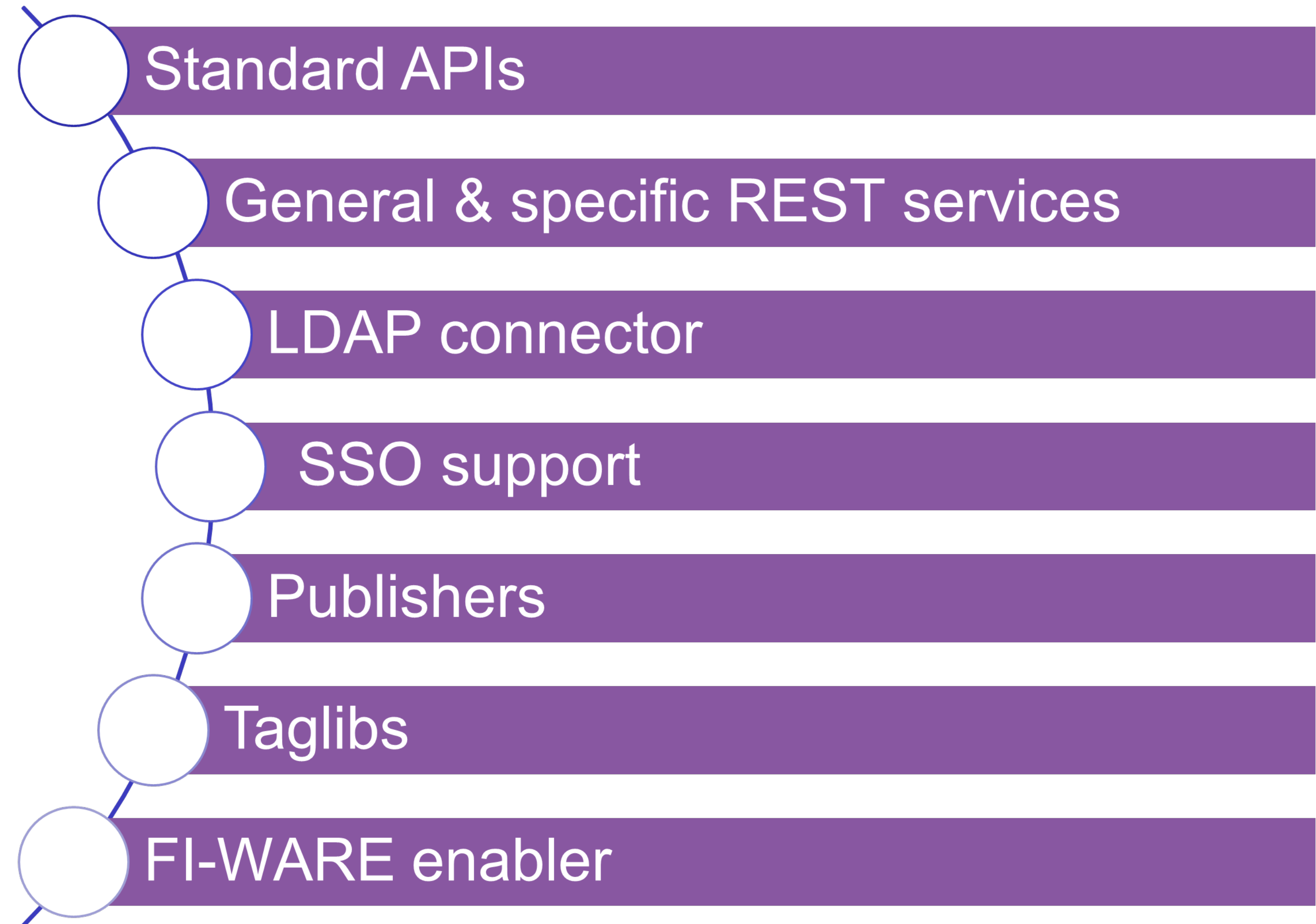
# Embedded Intelligence

**KNOWAGE**



**EMBEDDED INTELLIGENCE**

DISTRIBUTE BI CAPABILITIES  
AND RESULTS TO EXTERNAL  
APPLICATIONS



## CLIENT

## PROVIDER



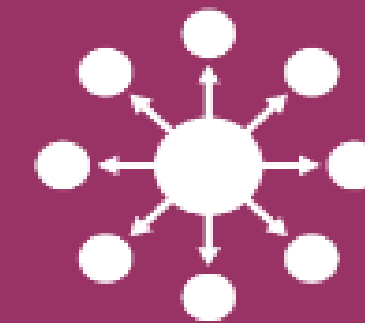
### NEED OF ANALYTICAL TOOL

To analyse his own (BIG) data



### NEED OF ANALYTICAL SERVICE

To get value from his own (BIG) data



### STRONG KNOWLEDGE OF SPECIFIC DOMAIN

To build ready-to-use analytical solution



### PRODUCT FARMS

To provide valuable add-on to the core product



# Use cases

## CLIENT

## PROVIDER

Download & discover  
Knowage



Ask for a subscription

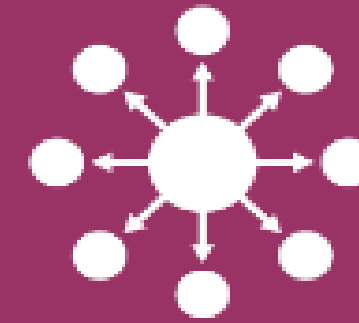


Build your enterprise solution

Activate your own Knowage  
instance on the cloud



Build your enterprise solution



### **STRONG KNOWLEDGE OF SPECIFIC DOMAIN**

To build ready-to-use  
analytical solution



### **PRODUCT FARMS**

To provide valuable add-on  
to the core product

# Use cases

**KNOWAGE**

## CLIENT

## PROVIDER



### NEED OF ANALYTICAL TOOL

To analyse his own (BIG) data



### NEED OF ANALYTICAL SERVICE

To get value from his own (BIG) data

Build an analytical model using Knowage



Sign an OEM agreement for rebranding



Offer it repeatedly



Offer it as a service/on-cloud

Integrate Knowage into your product



Sign an OEM agreement for integration



Offer your new empowered product



# DEMO OVERVIEW



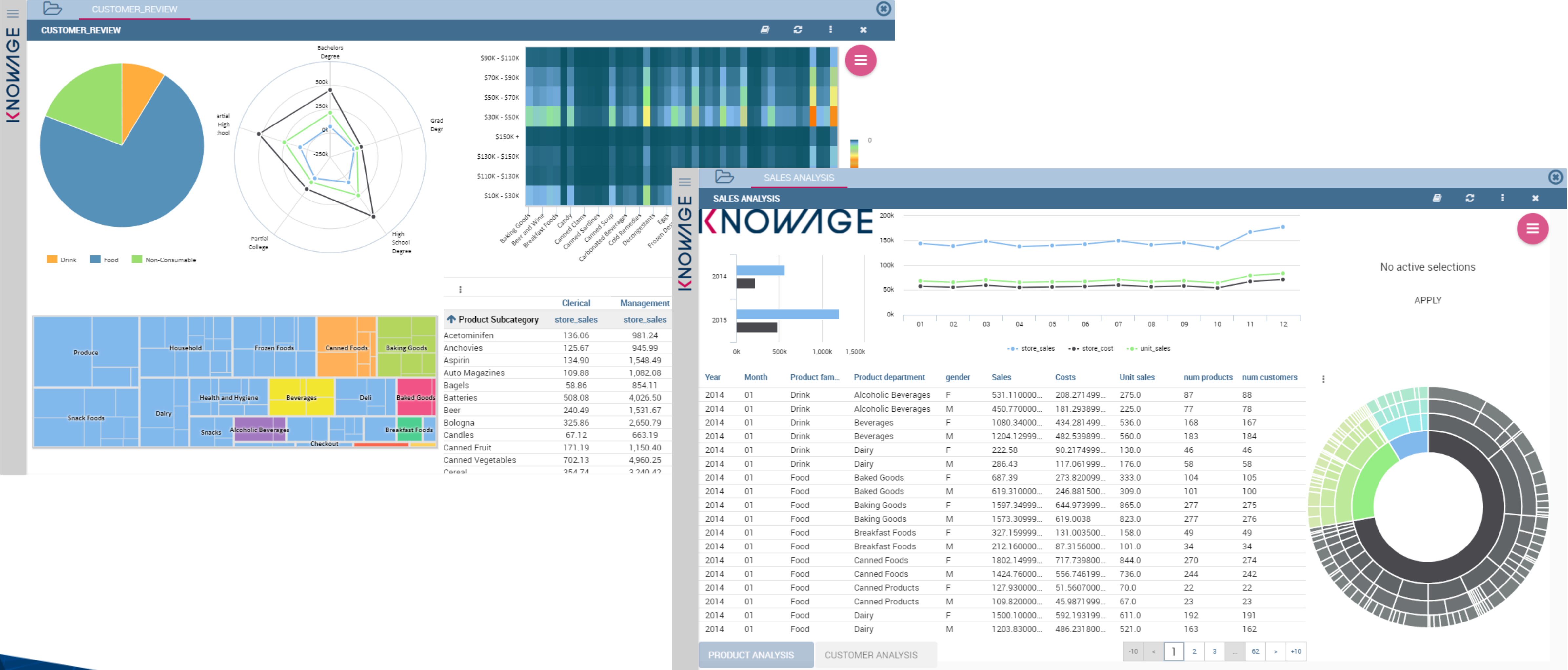


# General environment

The screenshot displays the KNOWAGE software interface, which is divided into several main sections:

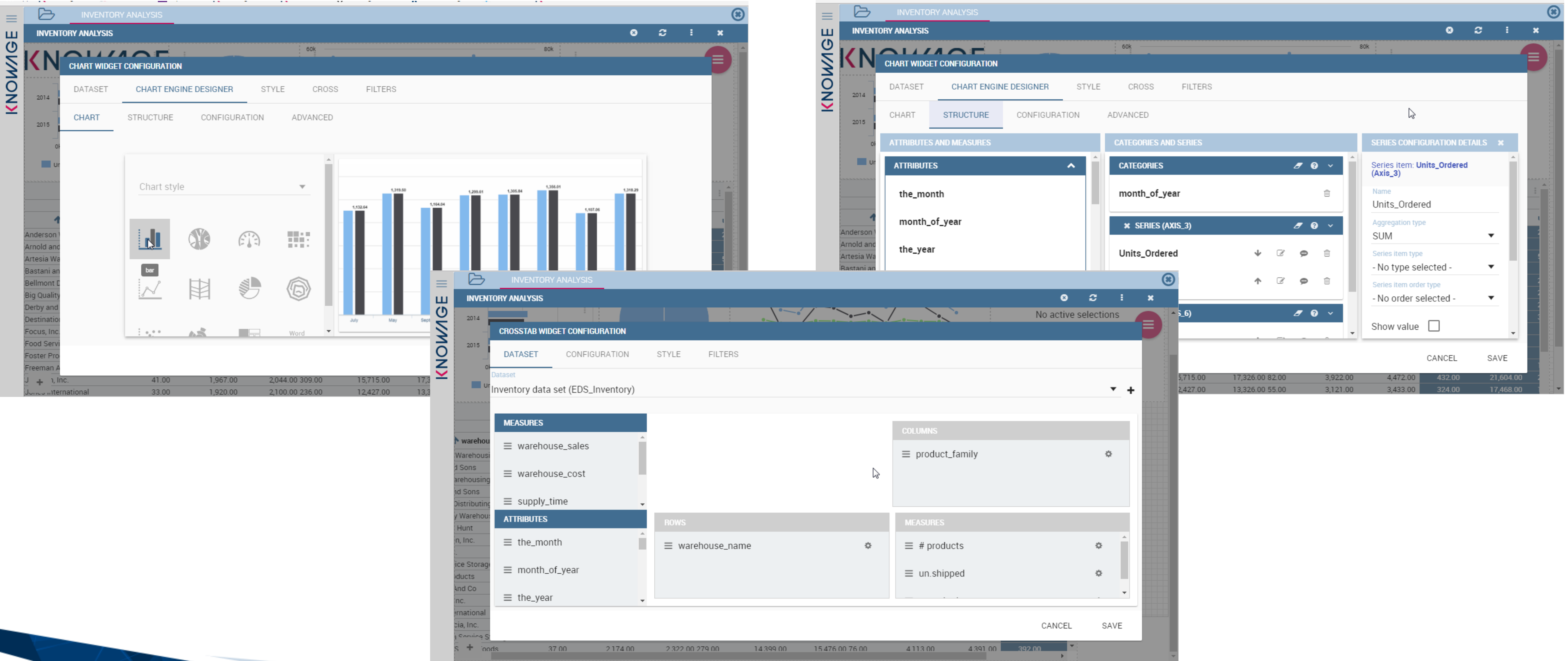
- DOCUMENT BROWSER (Left Panel):** This panel lists various functionalities under the 'Analytical Documents' category, including Charts, Reports, Dynamic Maps, Dashboards, Multidimensional Analysis, Whatif, SvgViewer, KPI, and Cockpit. It also shows user roles: demo\_admin and demo\_user.
- Functionalities > Analytical Documents > Charts (Main View):** This section displays a grid of charts and reports. The top row includes 'CITIES BY SALES' (a word cloud), 'COSTS BY PRODUCT CLASS' (a heatmap), and 'CRT\_SALESFAMILYSTORE' (a bar chart). The bottom row includes 'CUSTOMER CITIES' (a pie chart), 'DM\_PIE\_COMPOSITE\_PAR' (a pie chart), and 'REVENUE BY PROD' (a donut chart). Below these are 'REVENUES BY PRODUCT CLASS', 'SALARY BY EDUCATION AND POS', and 'SALARY BY POSITI'.
- MY WORKSPACE (Right Panel):** This panel shows a 'Recent' list with 'Documents', 'Data', 'Datasets', 'Models', and 'Analysis'. It also features a 'Home' section with a 'TO BE CHECKED' folder icon and two preview cards: 'COSTS BY PRODUCT CLASS' (a heatmap) and 'OLAP CUBE' (a table view).

# Interactive cockpit





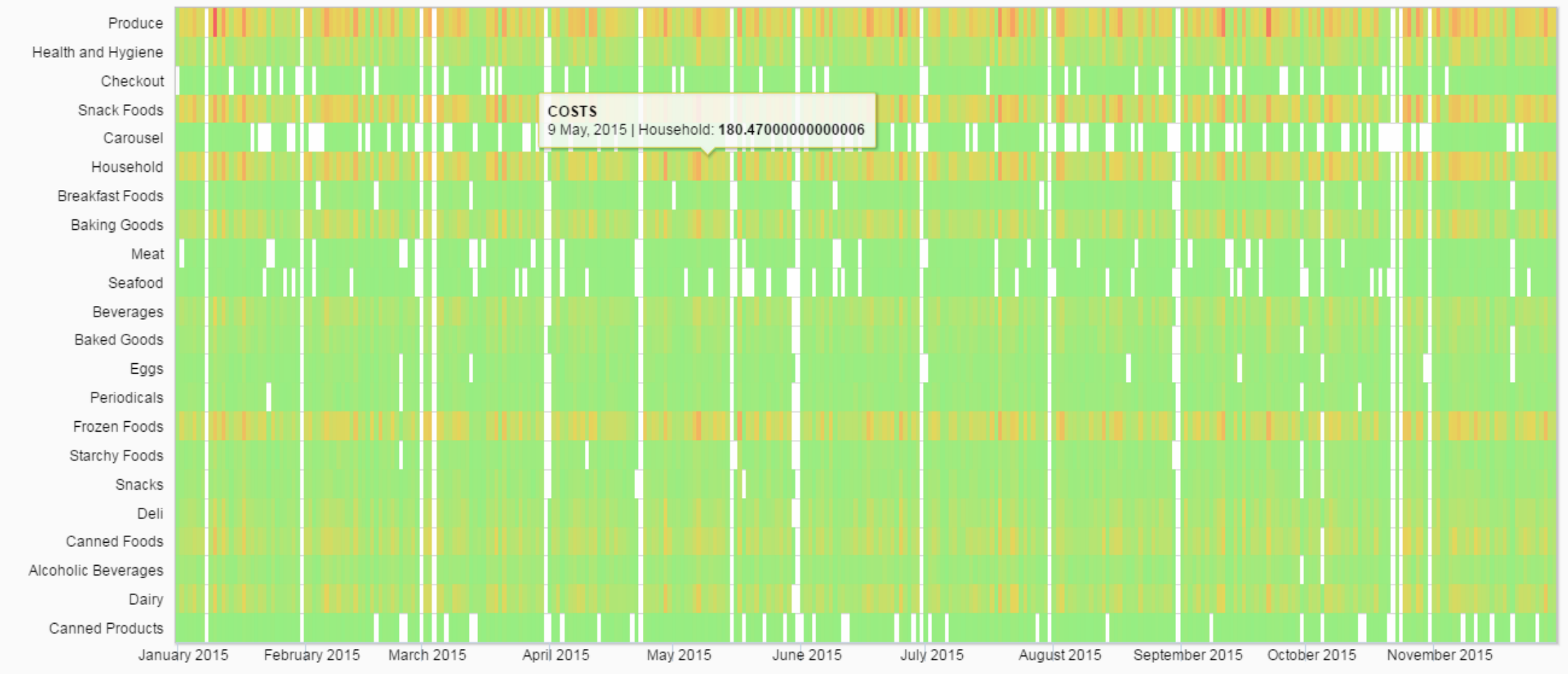
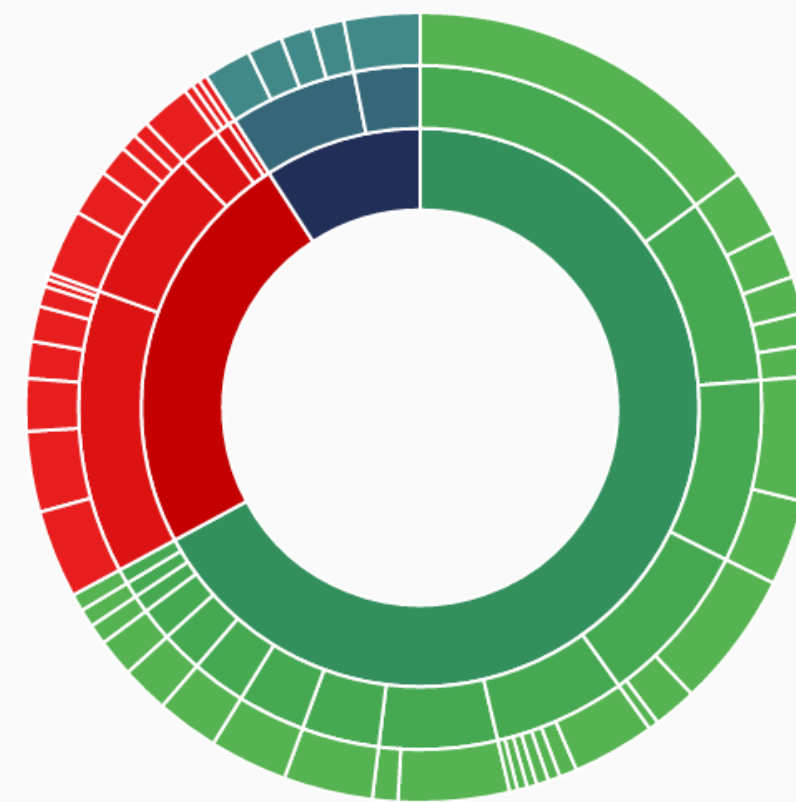
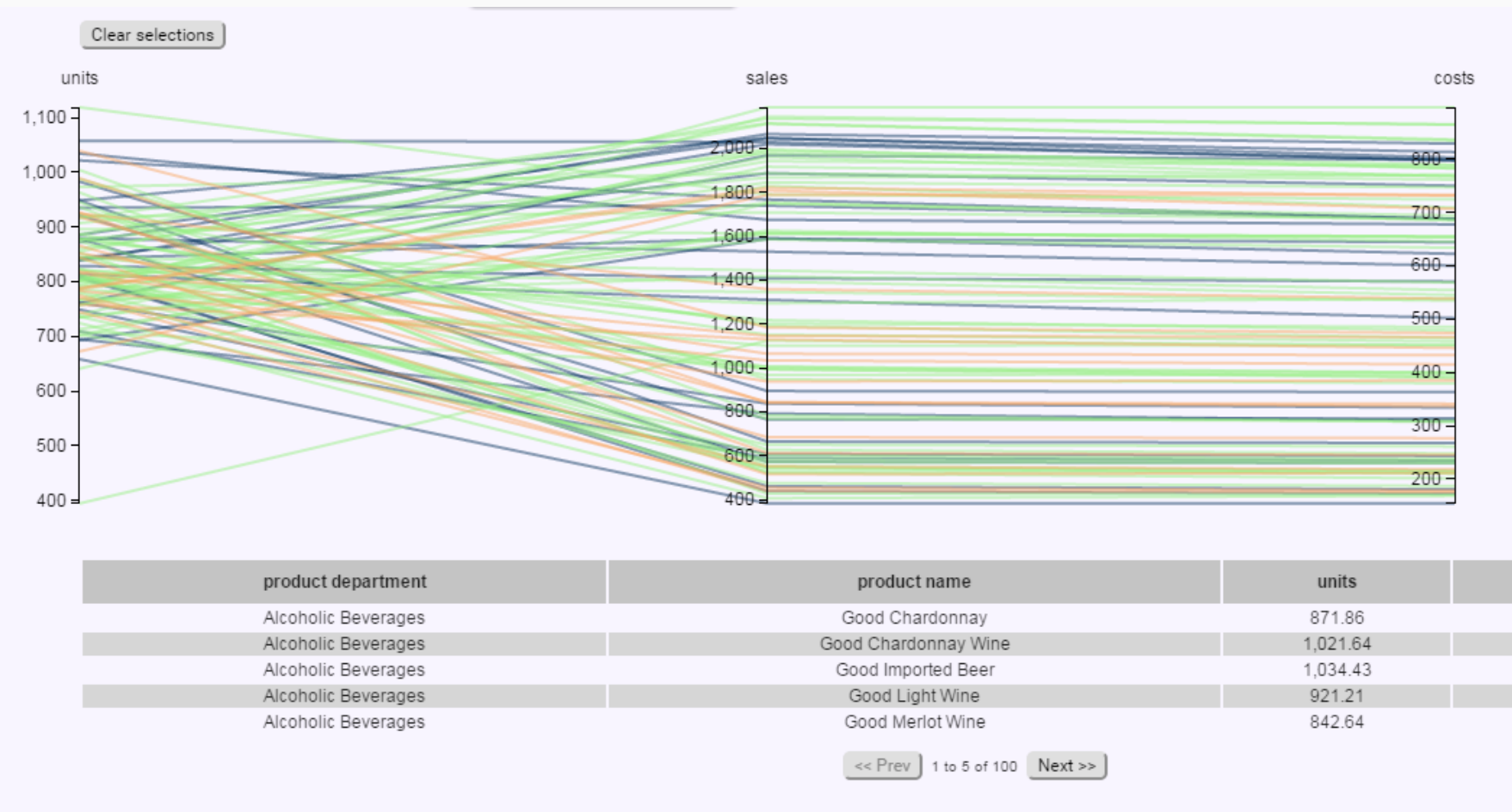
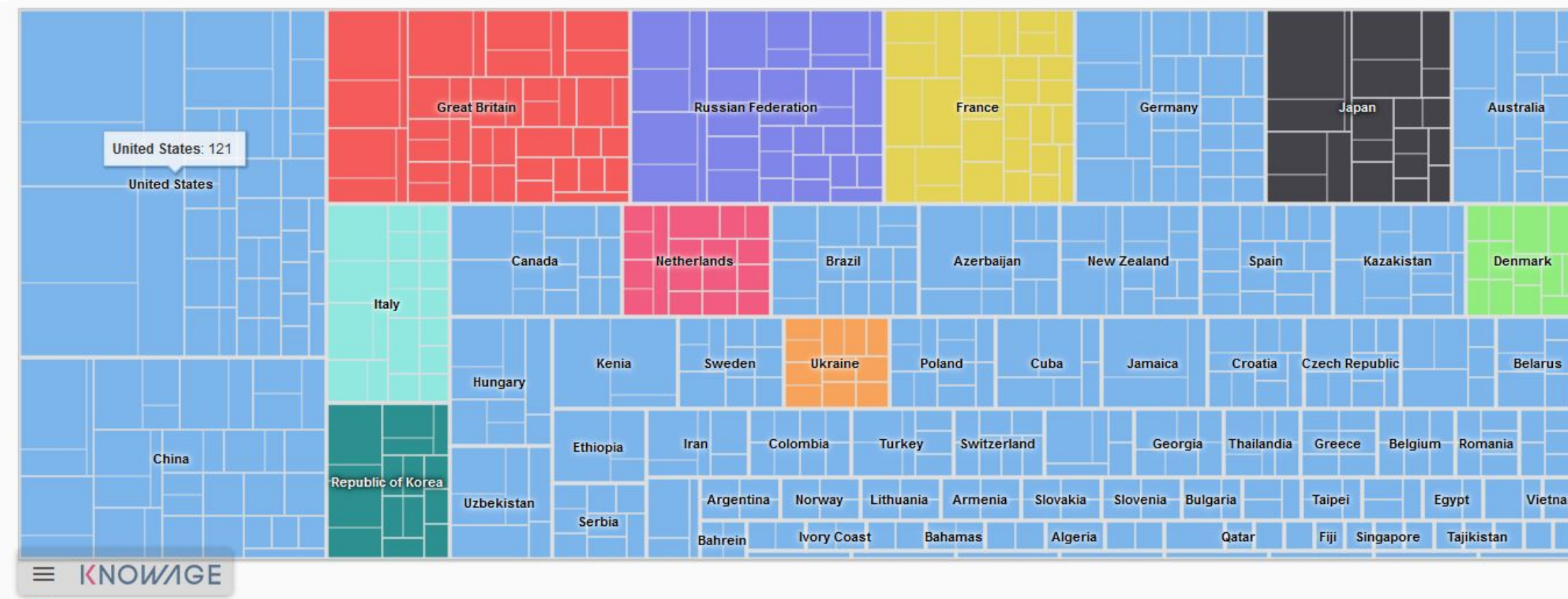
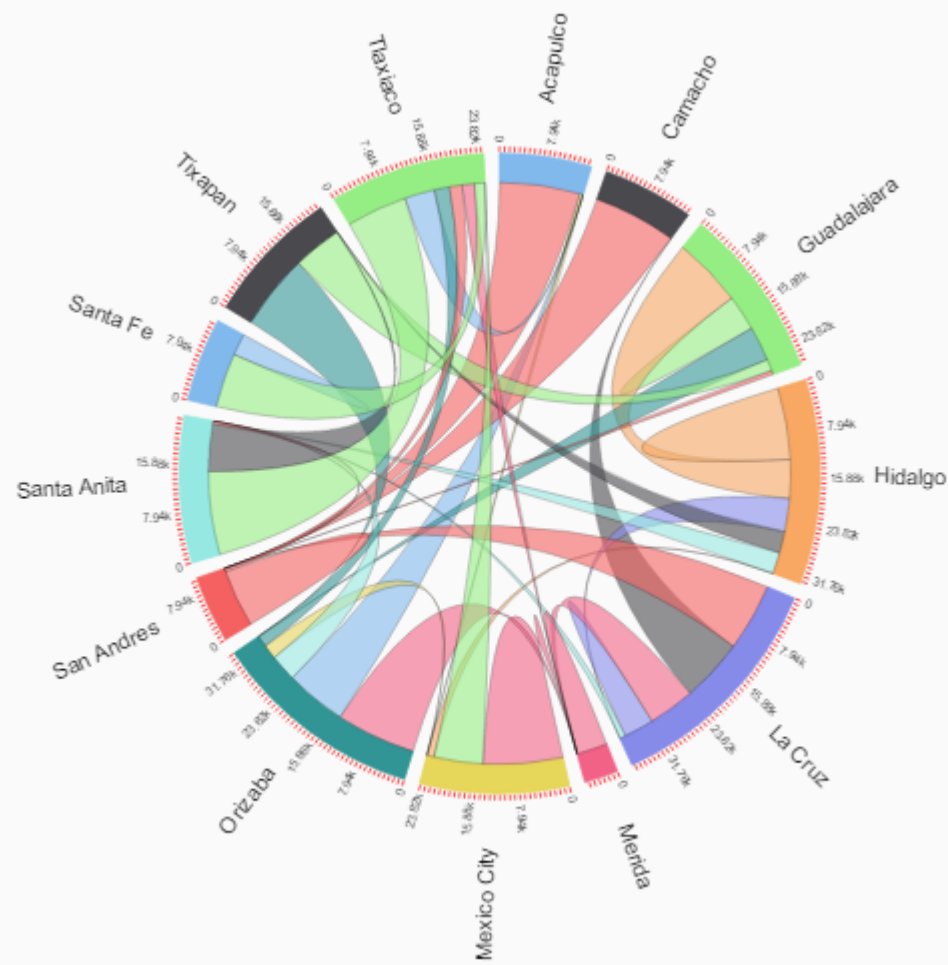
# Interactive cockpit- build by yourself



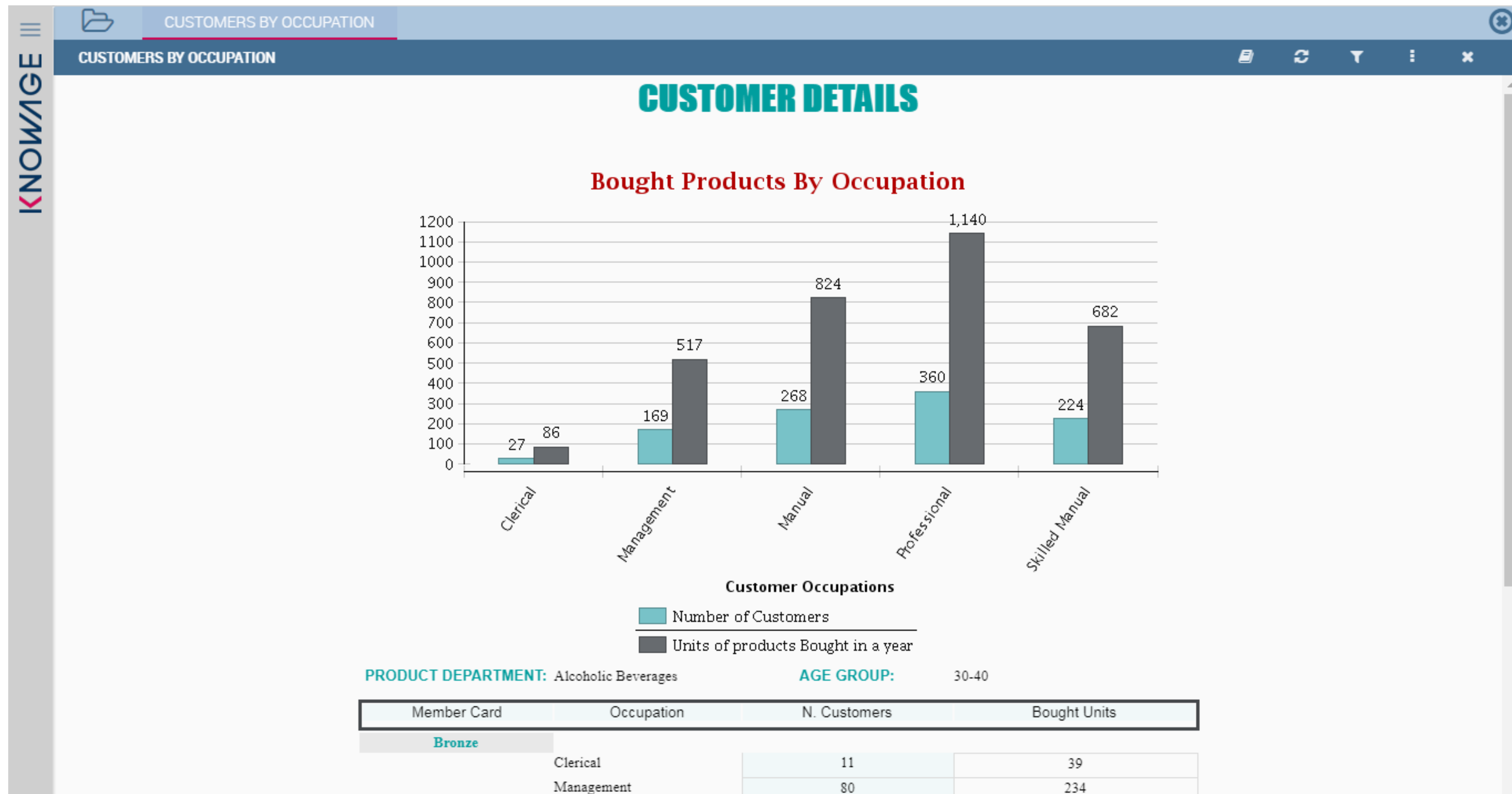


# Charts

**KNOWAGE**









OLAP CUBE

Time

Customers

Stores

Measures

	All Stores		USA		AL		AZ		CA		CO
	Store Sales	Store Cost	Store Sales	Store Cost	Store Sales	Store Cost	Store Sales	Store Cost	Store Sales	Store Cost	Store Sales
All Products	1,763,266.43	705,787.42	1,763,266.43	705,787.42	9,955.09	3,956.86	110,397.91	44,168.07	222,501.08	89,001.93	81,411.62
Drink	153,227.08	61,247.82	153,227.08	61,247.82	829.45	325.99	10,078.63	4,048.42	19,995.46	8,018.79	6,806.87
Alcoholic Beverages	44,455.30	17,775.20	44,455.30	17,775.20	247.86	96.12	2,734.73	1,087.30	5,719.09	2,282.89	2,061.39
Beverages	86,065.64	34,351.22	86,065.64	34,351.22	478.84	189.51	5,665.65	2,288.43	11,146.83	4,476.89	3,758.27
Dairy	22,706.14	9,121.40	22,706.14	9,121.40	102.75	40.35	1,678.25	672.69	3,129.54	1,259.01	987.21
Food	1,272,346.66	509,361.79	1,272,346.66	509,361.79	7,414.93	2,948.75	79,083.83	31,605.04	160,397.91	64,120.58	58,993.75
Non-Consumable	337,692.69	135,177.81	337,692.69	135,177.81	1,710.71	682.13	21,235.45	8,514.61	42,107.71	16,862.57	15,611.00
Carousel	4,849.65	1,944.02	4,849.65	1,944.02	29.25	11.40	323.49	126.99	611.36	243.04	262.86
Checkout	10,230.97	4,128.60	10,230.97	4,128.60	34.31	14.36	697.22	277.55	1,332.09	539.08	456.05
Health and Hygiene	102,942.09	41,318.28	102,942.09	41,318.28	577.41	233.64	6,520.78	2,623.17	12,464.59	4,996.23	4,780.21
Household	190,444.69	76,071.78	190,444.69	76,071.78	960.65	380.12	11,962.40	4,797.52	23,925.33	9,573.28	8,742.01
Periodicals	29,225.29	11,715.13	29,225.29	11,715.13	109.09	42.61	1,731.56	689.39	3,774.34	1,510.92	1,369.87

# What-if

KNOWAGE

USA MAP

WHAT-IF BY SEGMENT

WHAT-IF BY SEGMENT

Time

2016

Customers

...

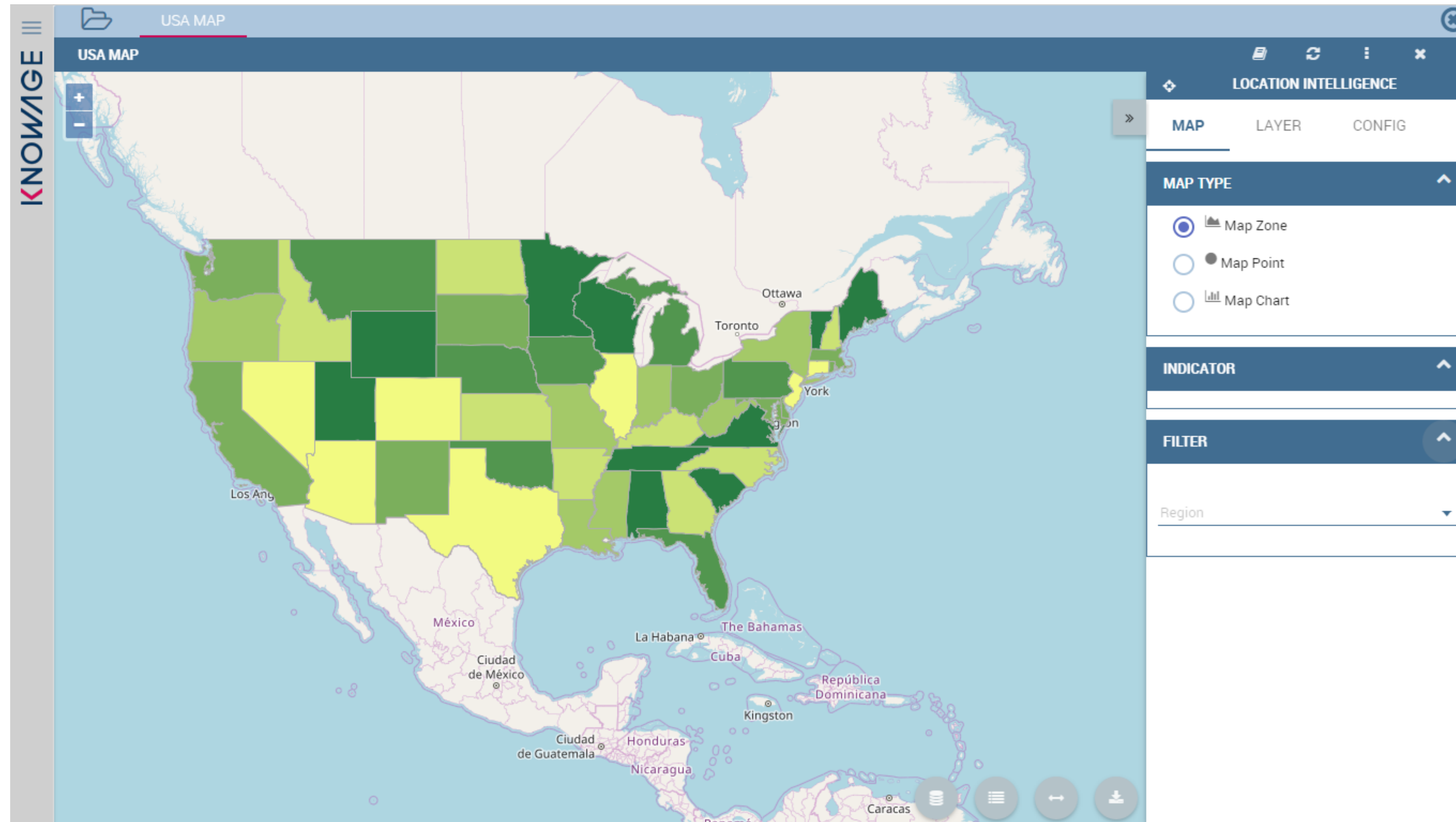
Version

v0

Stores

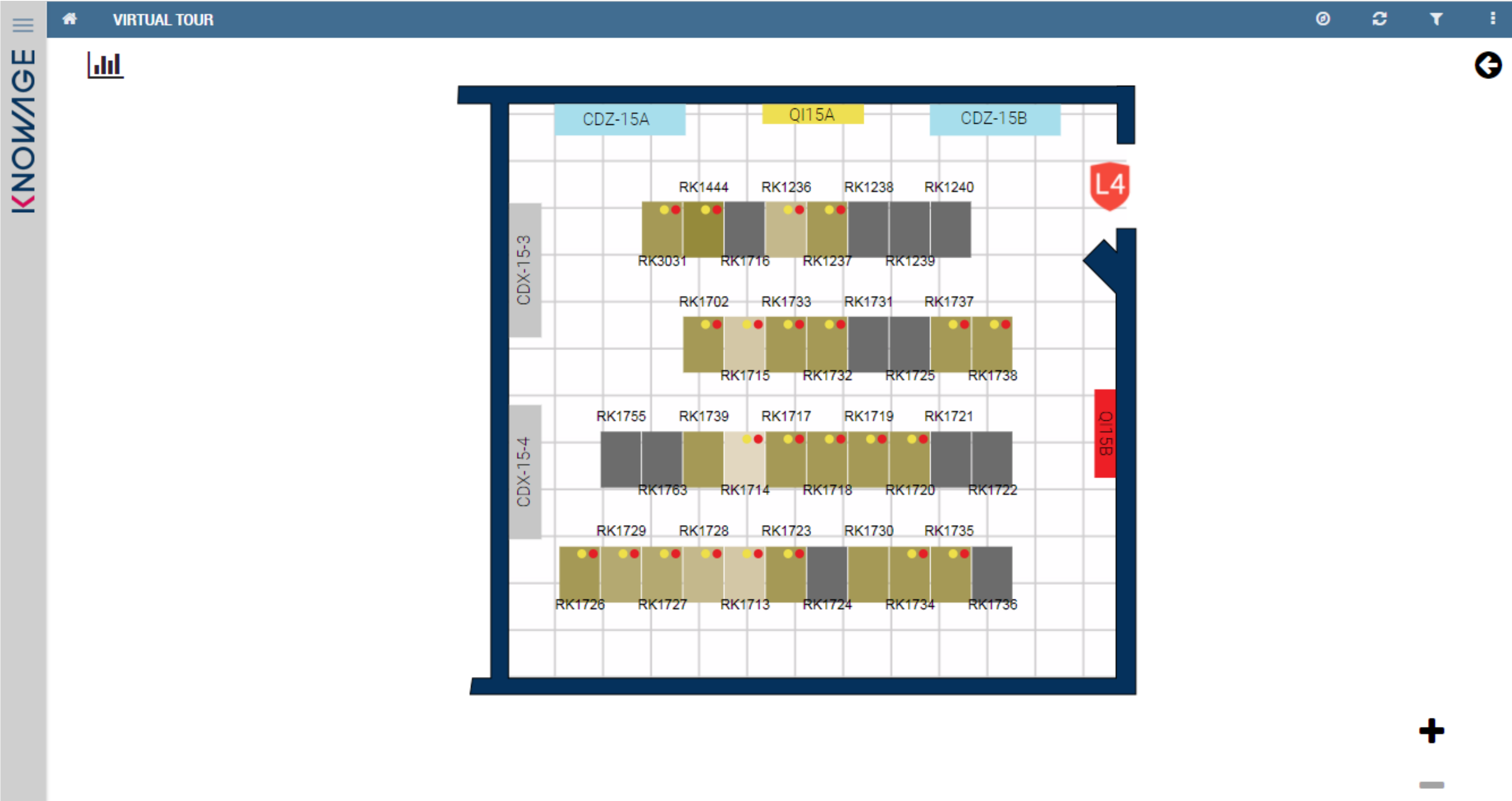
Measures

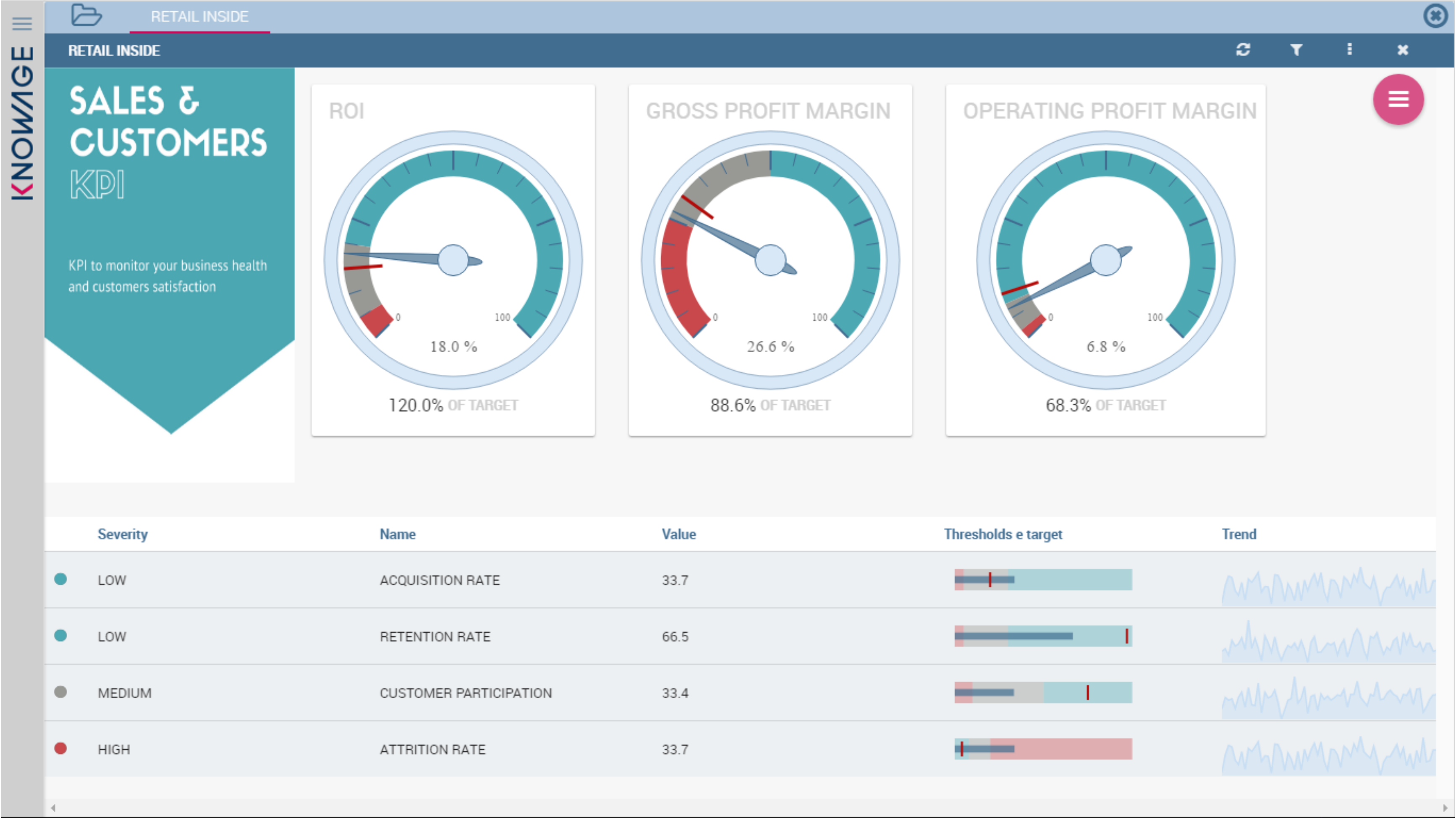
	All Stores			USA			AL			AZ	
	Store Sales	St.Cost	Un.Sales	Store Sales	St.Cost	Un.Sales	Store Sales	St.Cost	Un.Sales	Store Sales	St.Cost
All Products	1,198,389.53	480,305.28	566,200	1,198,389.53	480,305.28	566,200	5,249.12	2,076.52	2,440	60,801.52	24,387.53
Drink	104,411.81	41,779.12	52,257	104,411.81	41,779.12	52,257	471.64	182.71	235	5,806.27	2,347.16
Alcoholic Beverages	30,426.22	12,198.41	14,670	30,426.22	12,198.41	14,670	170.53	66.47	88	1,541.67	615.18
Beer and Wine	30,426.22	12,198.41	14,670	30,426.22	12,198.41	14,670	170.53	66.47	88	1,541.67	615.18
Beer	7,610.35										
Non-Alcoholic Wine											
Wine	22,815.87	9,145.80	10,879	22,815.87	9,145.80	10,879	142.66	55.53	76	1,108.86	445.97
Baking Goods											
Beverages	58,338.05	23,290.23	28,638	58,338.05	23,290.23	28,638	253.92	97.63	125	3,330.43	1,356.12
Dairy	15,647.54	6,290.48	8,949	15,647.54	6,290.48	8,949	49.19	18.61	22	934.17	375.86
Food	863,783.94	346,268.03	406,277	863,783.94	346,268.03	406,277	3,893.99	1,542.20	1,800	43,102.60	17,261.34
Baked Goods	35,599.84	14,264.74	16,713	35,599.84	14,264.74	16,713	129.15	51.49	59	1,645.80	646.58
Baking Goods	83,599.52	33,455.70	43,461	83,599.52	33,455.70	43,461	363.66	144.42	196	4,294.37	1,721.04
Breakfast Foods	15,041.68	6,042.12	7,385	15,041.68	6,042.12	7,385	70.35	27.25	28	813.05	323.08





# SVG map







# Metamodel

INVENTORY

CLOSESAVE

BUSINESS MODELPHYSICAL MODEL

BUSINESS CLASS/BUSINESS VIEW

Inventory fact

Product id

Time id

Warehouse id

Store id

Units ordered

Units shipped

Warehouse sales

Warehouse cost

Supply time

Store invoice

Product

Product class

Region

Store

Time by day

Warehouse

Warehouse class

INVENTORY FACT

DELETE

PROPERTY LISTATTRIBUTESCALCULATED FIELDINBOUNDOUTBOUND

Name	Primary Key	In Use
Product id	<input checked="" type="checkbox"/>	<input checked="" type="checkbox"/>
Time id	<input checked="" type="checkbox"/>	
Warehouse id	<input checked="" type="checkbox"/>	
Store id	<input checked="" type="checkbox"/>	
Units ordered	<input type="checkbox"/>	
Units shipped	<input type="checkbox"/>	
Warehouse sales	<input type="checkbox"/>	
Warehouse cost	<input type="checkbox"/>	
Supply time	<input type="checkbox"/>	
Store invoice	<input type="checkbox"/>	

INVENTORY

CLOSESAVE

BUSINESS MODELPHYSICAL MODEL

BUSINESS CLASS/BUSINESS VIEW

Inventory fact

Product id

Time id

Warehouse id

Store id

Units ordered

Units shipped

Warehouse sales

Warehouse cost

Supply time

Store invoice

Product

Product class

Region

Store

Time by day

Warehouse

Warehouse class

UNITS SHIPPED

PROPERTY LIST

MISC

name

Units shipped

description

STRUCTURAL

Visible

true

Type

measure

Aggregation Type

SUM

Format String

#,###

Data Type

# Business models on different data sources



**Foodmart\_Sales**

Sales on RDBMS



**Inventory\_SparkSQL**

Inventory from SparkSQL



**Expense\_Hive**

Expense\_Hive

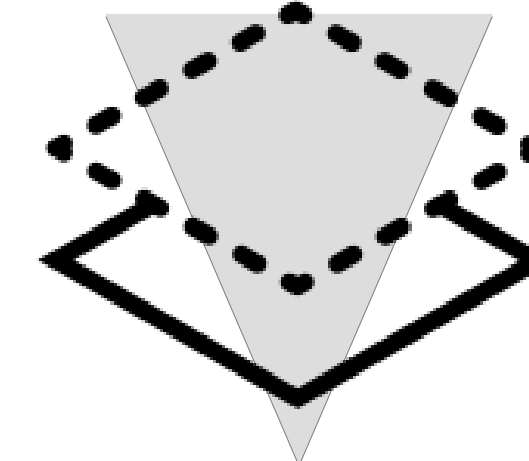
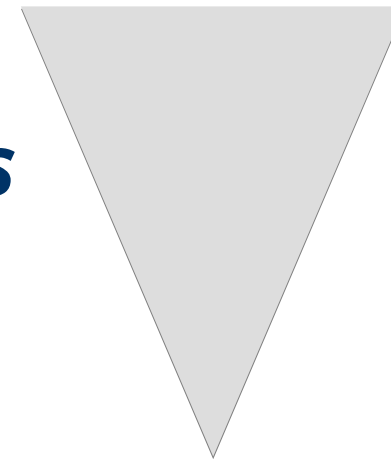




# Any data via universal dataset

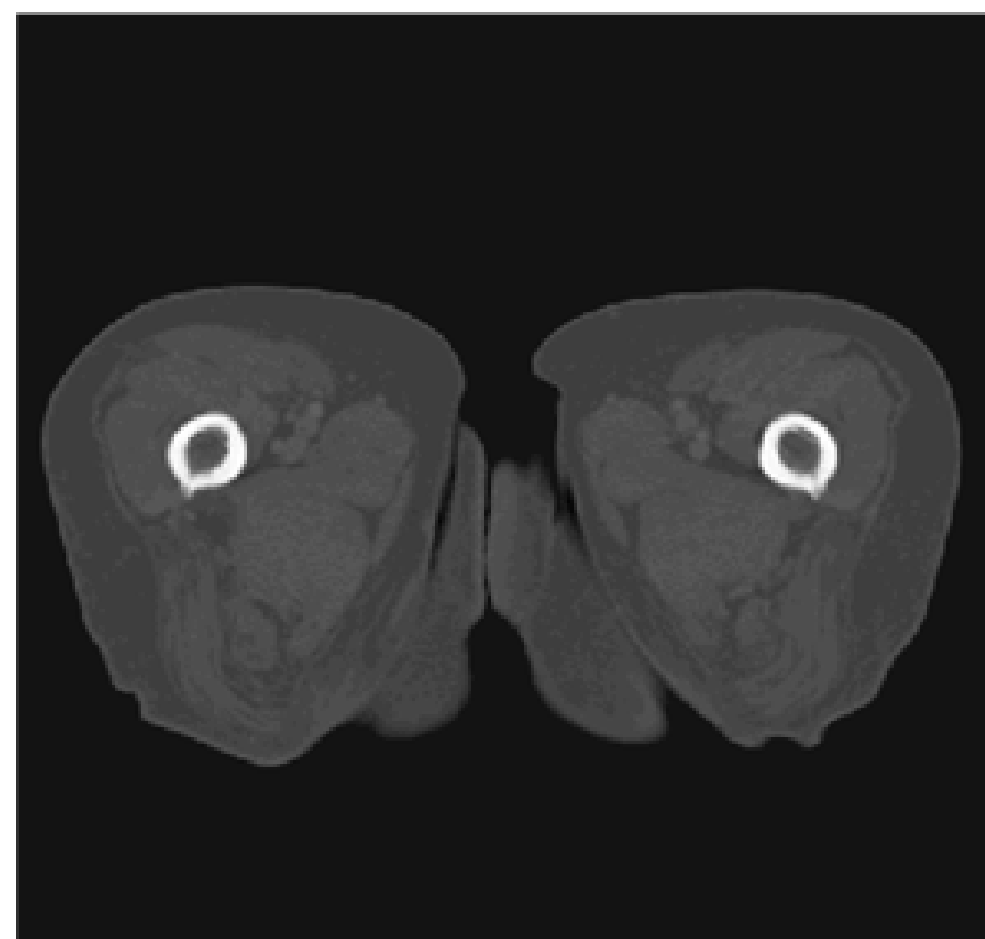
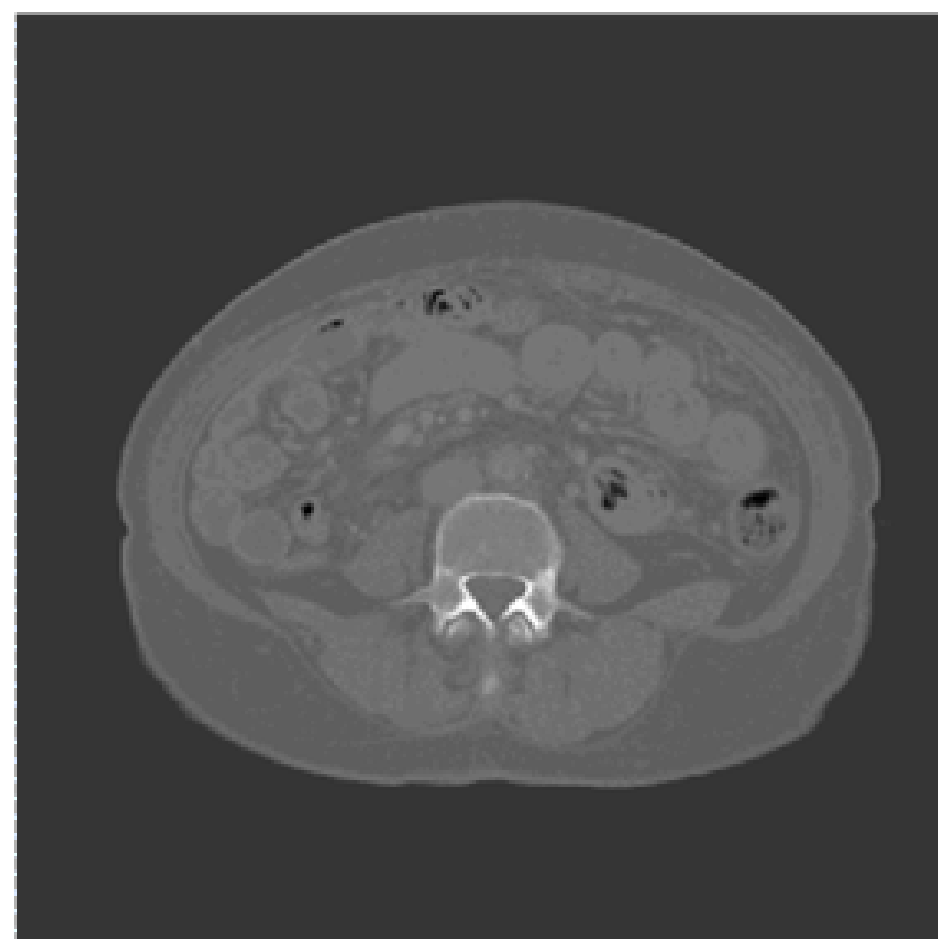
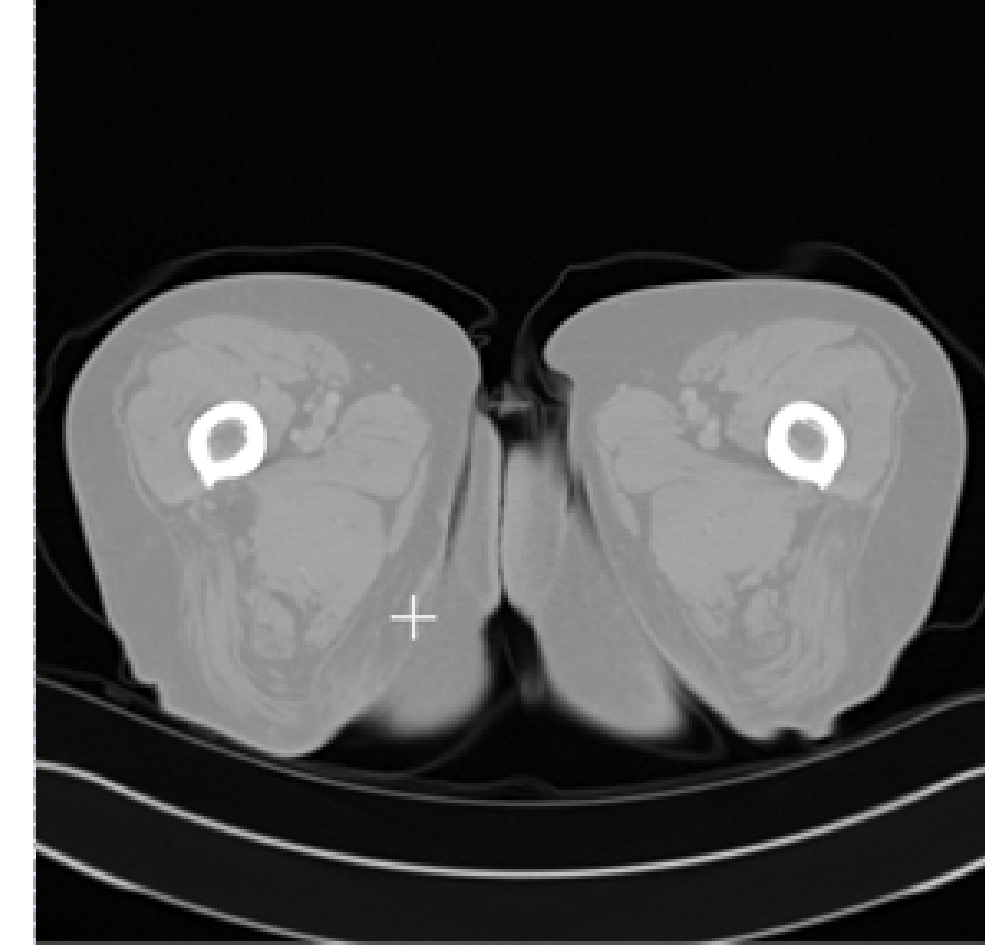
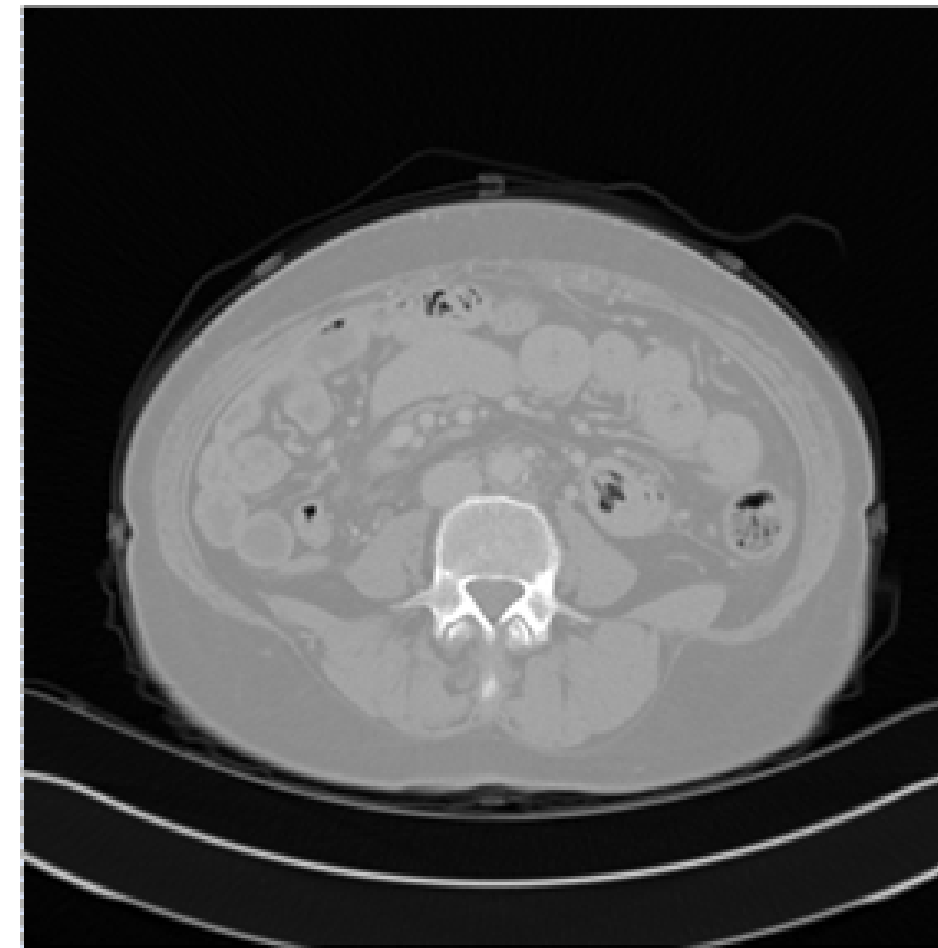


*Direct access*



*Metamodel*







- Entirely web-based & portable
- **Security** by IT
- **Data integration**
- **Agile** for users
- **Self-service** capabilities
- Self-organization of the **working space**
- Sharing **notes** & comments
- **Sharing** data
- From ready-to-use up to **build-by-yourself**
- All-in-one, with **tailored size**

# BUSINESS MODEL



# Two editions

## COMMUNITY EDITION

- Available for free
- Open repository
- Usable under the AGPL license
- OEM result must be open source (AGPL)
- Full usability for end-users
- Not guaranteed third-part libraries rights
- Community-based support
- **No professional services**
- General documentation

## ENTERPRISE EDITION

- Available for fee, under **annual subscription**
- Private repository
- Usable with **AGPL exceptions** (no constraints)
- OEM for commercial products
- Facilities for admin, advanced features for end-users
- Guaranteed **third-part rights**
- Maintenance and **professional services**
- Professional support with SLA
- Professional documentation

# Knowage – CE vs EE



KNOWAGE			Product	Licensing	Services	Resources	About Us	Private Area
END-USER DEVELOPER ADMIN			COMMUNITY EDITION		ENTERPRISE EDITION			
REPORTING	Static, pixel-perfect reports		✓	✓				
CHARTS - STANDARD CAPABILITIES	Common charts (bar, line, pie, radar, etc.) based on free libraries		✓	✓				
CHARTS - ADVANCED CAPABILITIES	Interactive and zoomable charts based on advanced libraries with commercial licence		○	✓				
OLAP - STANDARD CAPABILITIES	Olap engine with drill-down, slice&dice, drill-trough capabilities. Web designer for OLAP documents		✓	✓				
OLAP - ADVANCED FEATURES	Charts (*), calculated fields, time series, MDX functions		○	✓				
WHAT-IF - STANDARD CAPABILITIES	What-if engine for scenario simulation over hierarchical models, with versioning. Simulation on facts, basic propagation algorithms. On-line usage with ROLAP technology		✓	✓				
WHAT-IF - ADVANCED FEATURES	Simulation on dimensions; sequential workflow to manage concurrent usage; advanced propagation algorithms(*). Off-line usage with synchronizing methods and MOLAP strategy(*)		○	✓				
COMPOSED VIEW	Composed view to combine different analytical documents in a single view		✓	✓				
COCKPITS - STANDARD CAPABILITIES	Interactive cockpits with associative logic; multi sheet. Widgets for text, image, chart, table, cross table, external document (report, etc). Additional widgets for KPI, map and SVG design		✓	✓				
COCKPITS - ADVANCED FEATURES	Near real-time with refresh time; associations discovery		○	✓				
KPI - STANDARD CAPABILITIES	Measures, KPIs, thresholds and targets. Schedule the KPIs evaluation and centralized alerting system. Integration with context-broker GE in FI-WARE ecosystem		✓	✓				

[www.knowage-suite.com/site/licensing/editions-comparison](http://www.knowage-suite.com/site/licensing/editions-comparison)



# KNOWAGE – Modular offering



KNOWAGE						
<a href="#">Product</a> <a href="#">Licensing</a> <a href="#">Services</a> <a href="#">Resources</a> <a href="#">About Us</a> <a href="#">Private Area</a>						
END-USER	DEVELOPER	ADMIN				
	BD	SI	ER	PM	PA	LI
REPORTING	✓	✓	✓	○	○	○
CHARTS	✓	✓	○	✓	○	○
OLAP	○	✓	○	○	✓	○
WHAT-IF	○	○	○	○	✓	○
COMPOSED VIEW	✓	✓	○	○	○	○
COCKPITS	✓	✓	○	○	○	○
COCKPITS - KPI WIDGET (*)	○	○	○	✓	○	○
COCKPITS - MAP WIDGET (*)	✓	○	○	○	○	✓
KPI	○	○	○	✓	○	○
DATA/TEXT MINING	✓	○	○	○	✓	○
DATA/TEXT MINING - FUNCTION CATALOGUE	○	○	○	○	✓	○
DATA/TEXT MINING - PRE-BUILT FUNCTIONS AND MODELS (*)	○	○	○	○	✓	○
FREE INQUIRY	✓	✓	○	○	○	✓

[www.knowage-suite.com/site/licensing/product-comparison](http://www.knowage-suite.com/site/licensing/product-comparison)

[www.knowage-suite.com](http://www.knowage-suite.com)

[knowage@eng.it](mailto:knowage@eng.it)

